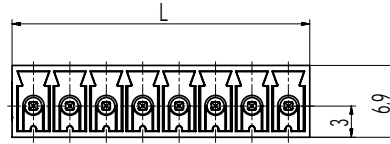
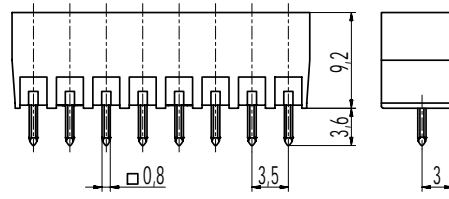
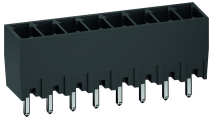


110-M-121

Pin strip
 Plug-in direction vertical to PCB, flat side walls



GENERAL INFORMATION

Pitch	3,5 mm
No. of poles	2 - 12
Usable with	all plug connectors of series 110
Additional Information	For versions with connecting flanges see 110-M-225. For versions with false insertion prevention see 110-M-221.

TECHNICAL DATA

Overvoltage Category	III	III	II
Pollution Severity Level	3	2	2
Rated Voltage	160 V	160 V	320 V
Rated Impulse Voltage	2,5 kV	2,5 kV	2,5 kV
Rated Insulation Voltage	130 V acc. to EN 60998-1		
Rated Current	8 A		
Hole in PCB	ø 1,3 mm		

APPROVALS

	Current [A]	Voltage [V]	Group	AWG	[Nm]
	8	300	B, D		
	8	300	B		

MATERIAL

Moulding	PA, grey, V-0
Comparative Tracking Index	CTI ≥ 600
Insulating Group	I
Temperature Range	-40°C up to 100°C
Solder pin	0,8 x 0,8 mm; tin plated brass

OPTIONS / ACCESSORIES

- Consecutive numbering
- Special marking according to drawing
- Self-adhesive marking strip
- Pitch of 7 mm for larger clearance and creepage distances
- Coding elements 120-K

CONFIGURATIONS

Poles	Part number	Article number	Length (L)	Packaging	PU
2	110-M-121/02	20.841.027	7,60 mm	Box	200
3	110-M-121/03	20.841.028	11,10 mm	Box	200
4	110-M-121/04	20.841.029	14,60 mm	Box	100
5	110-M-121/05	20.841.030	18,10 mm	Box	100
6	110-M-121/06	20.841.031	21,60 mm	Box	100

further number of poles on request

